

Source: Management Plan for the Conservation and Sustainable Use of the Natural Values of the Privately Owned, Nature Park "Solana Ulcinj", Montenegro

Faculty of Architecture, University of Ljubljana

Salinas - salt production & eco tourism

Analyse

The participatory approach to urban planning our group researched and applied on the territory of Ulcinj Salinas. As it is outstanding man made landscape combined with special and very vivid natural habitat of over 2000 bird species, our base of work was the fact that salt production, which enabled this great natural diversity, has to remain on the site to provide the sufficient living conditions the birds need. Our task was to propose a way to arrange the situation by linking the salt production, eco-tourism, leisure and nature.

The site is abandoned since the beginning of 2014 and it necessary to start with the production as soon as possible and it remains under protection and until 2025 any building on the site, with exception of salt production facilities, is prohibited. In that context all new activities are moved to the Salinas edge and on the area, which is not use for the salt production anymore. To locate tourism facilities to the external edge of Salinas is important participatory planning approach on the area; namely in that way we can convince the local community to take care of salinas and start to appreciate their presence. Including owners of the bordering land in the presentation of natural heritage will bring them also economic benefits and better living conditions. That would be also the condition for their better care of area and prosecute the poachers.

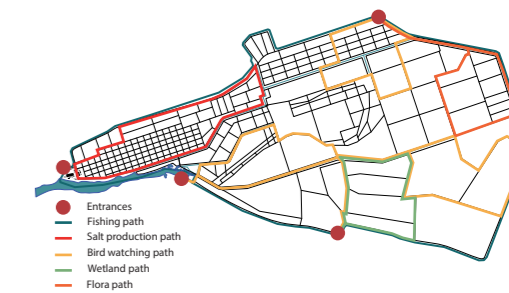
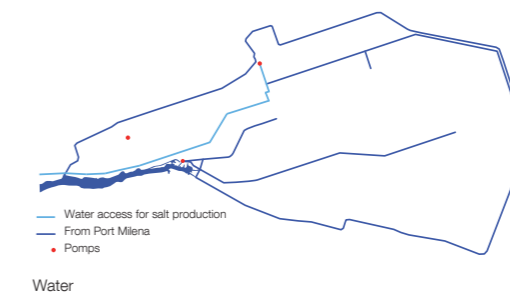
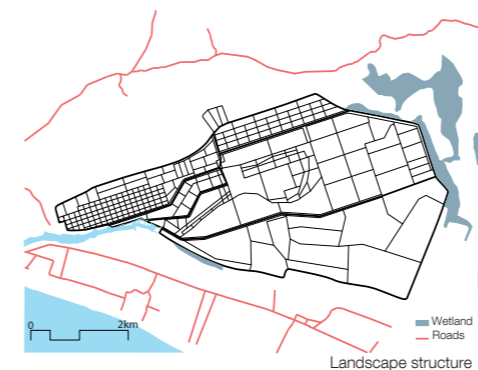
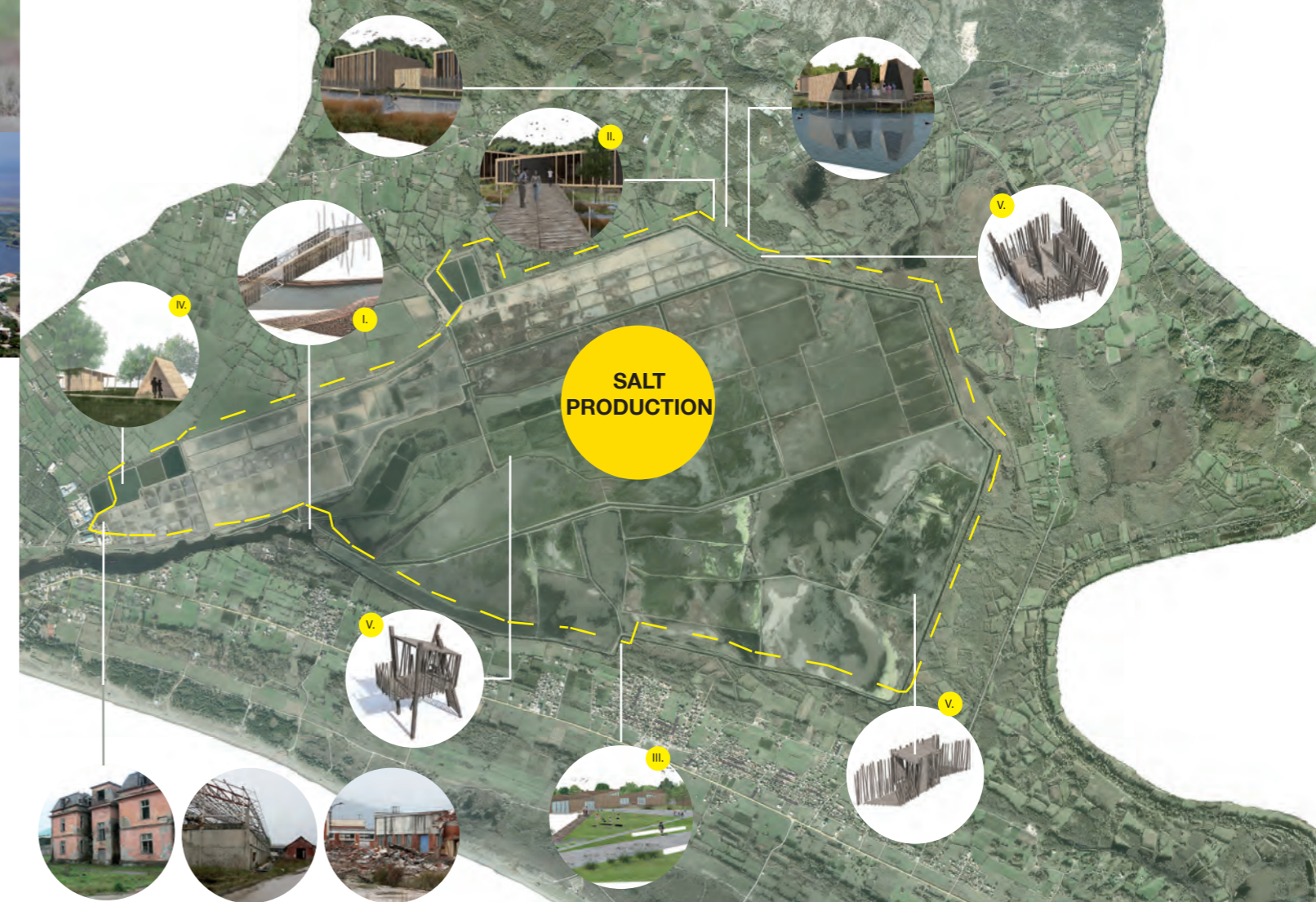
We propose several interventions of moderate scale to revitalize the area on the edges of the Salinas. The system of different thematic pathways is created to allow the visitors to fully experience the site. The design approach is inspired by nature, local rural settings, concept of reusing materials and creating low impact buildings.

Mentor:
doc.dr.Sonja Ičko

Students:
Guillern Elvira
Lucie Colas
Katja Jagličić
Pablo Galdo
Lorea Diaz
Raphaëlle Gaury

Proposed projects:

1. Water entrance in Milena port channel and small boat port
2. North entrance with dispersed nano-structures hotel and wellness centre
3. South entrance with museum of Salinas natural heritage
4. Revitalizing of former water basin with eco pool, sport, camping and mud SPA area
5. Thematic pathways and bird watching structures





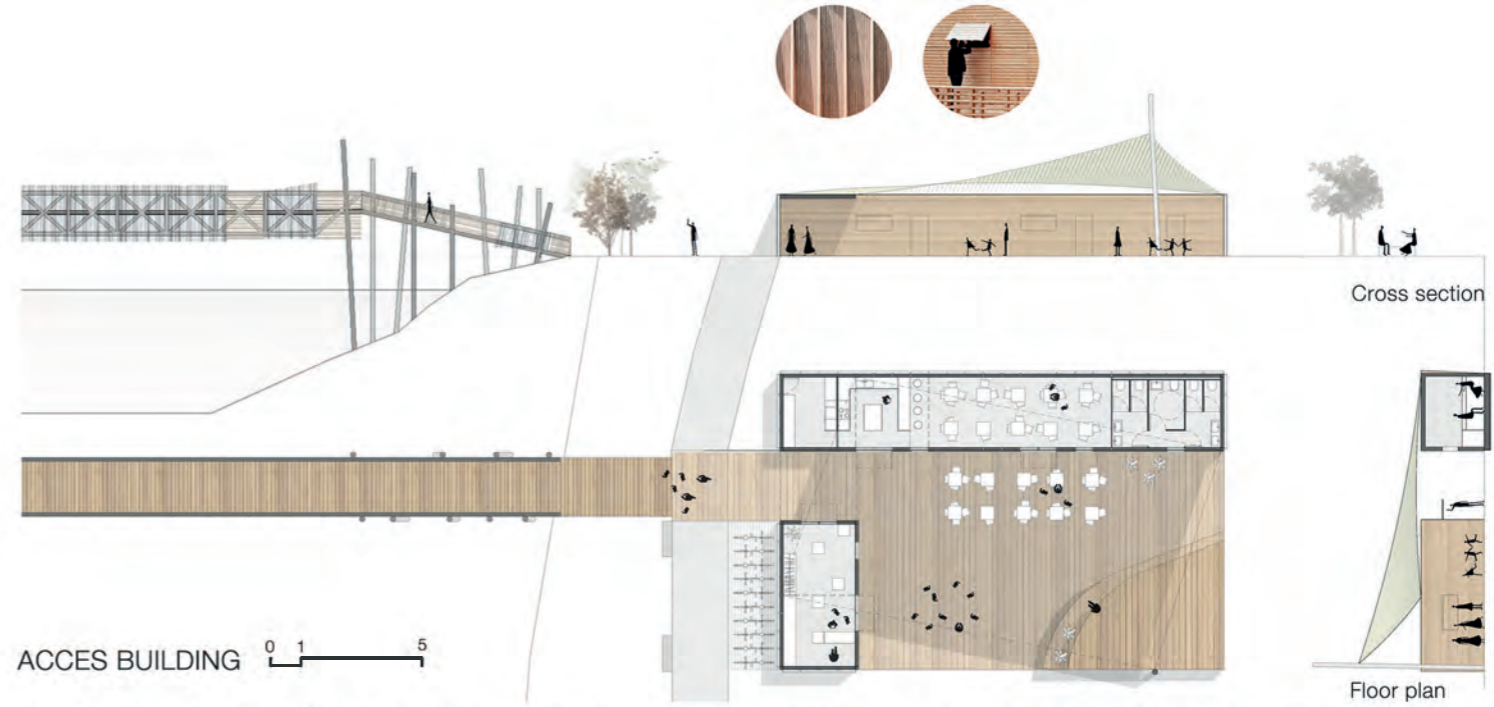
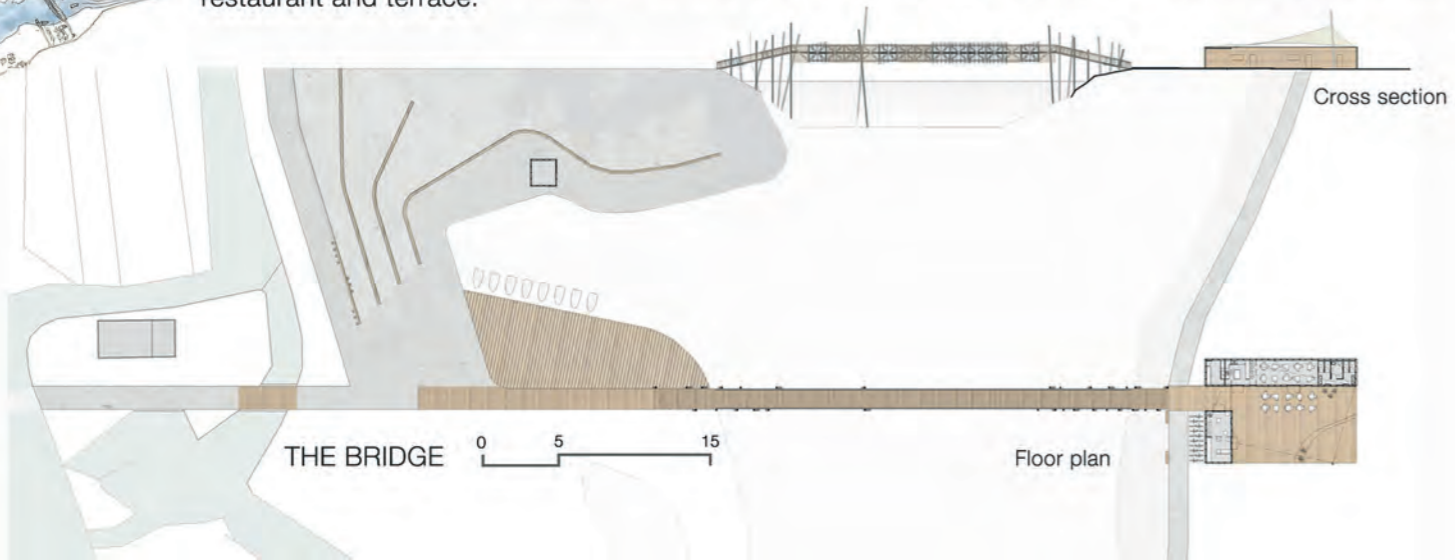
Satelite view of location

Guillem Elvira

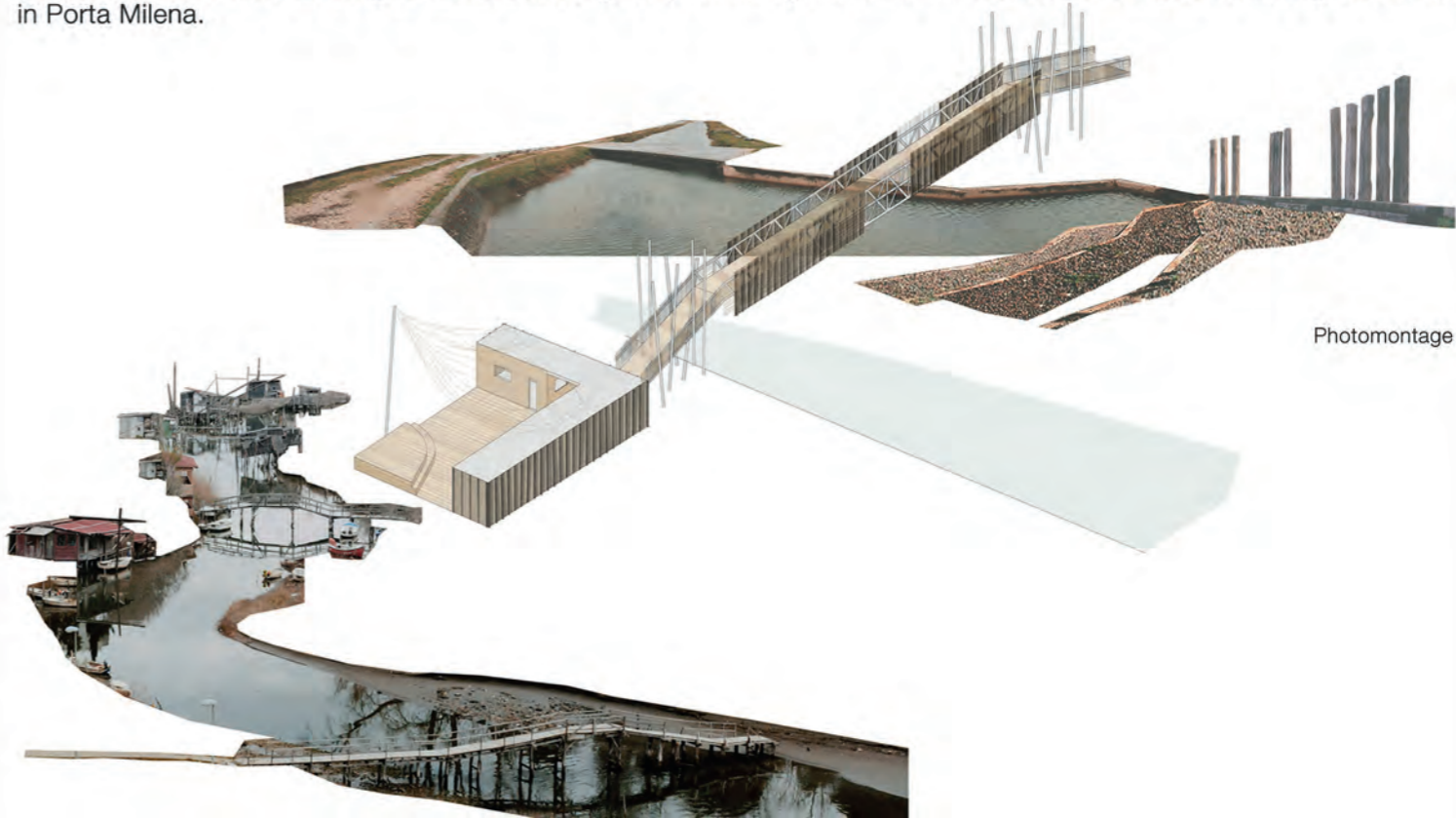
Salinas - salt production & eco tourism

Water entrance in Milena port channel and small boat port

The access to the Salinas complex takes place through a bridge, arriving from Porta Milena by boat. That area includes now a little marina and the acces building for tickets, bikes renting, store, little restaurant and terrace.

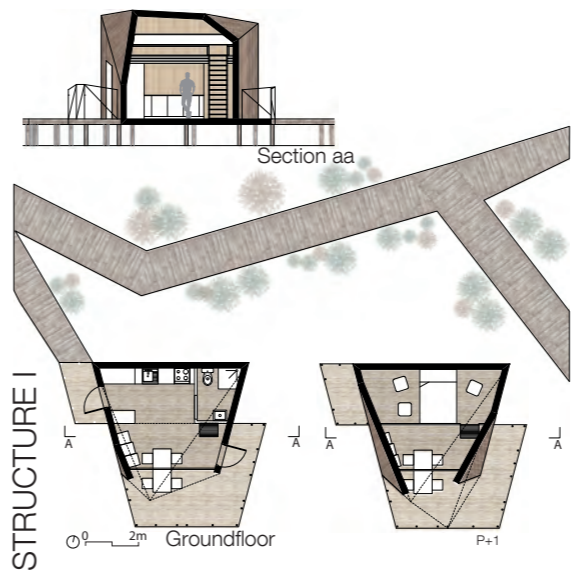


Shapes, materials and framing are used following the preexisting elements on the site like Calimeras, fishing structures in Porta Milena.





Access to the structure by one path in wood



STRUCTURE I

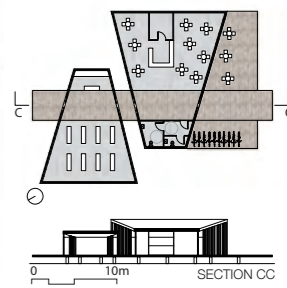


View on one of the structure i



ENTRANCE

Access to the entrance



SECTION CC

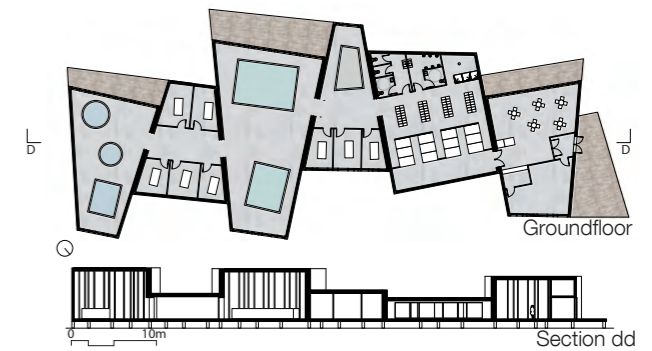


View on one of the structure iii from the salina



STRUCTURE III

STRUCTURE II



Groundfloor

Section dd



SPA

View on the spa

Lucie Colas

Salinas - salt production & eco tourism

North entrance with dispersed nano-structures hotel and wellness centre

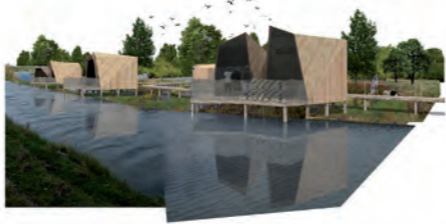
These 3 interventions belong to the project of the tourism of the salina : The North East Entrance, the Spa and the Nano Structures. Inside the entrance there is a little explanation about the Salina, a shop to buy products made with salt, a café, and a place to rent bike. That entrance gives access to the Salina, the Spa and the Nano Structures. The common concept for these buildings is folding. It is a theme for the all area. These Nano Structures are an accommodation for people coming to the Salina. They are located in the wetland that is why all the paths and the structures are on piles. This is also a solution to protect the nature. There is 3 type of structure, depending of the number of people.

Each structure is made in wood by wood frame, with the use of different type. The inspiration is the Kalimero, structure for fishing, from Ulcinj. The hanrail is in textile, too remember also the Kalimero. All the structures are open in one direction, to highlight a view on the nature.



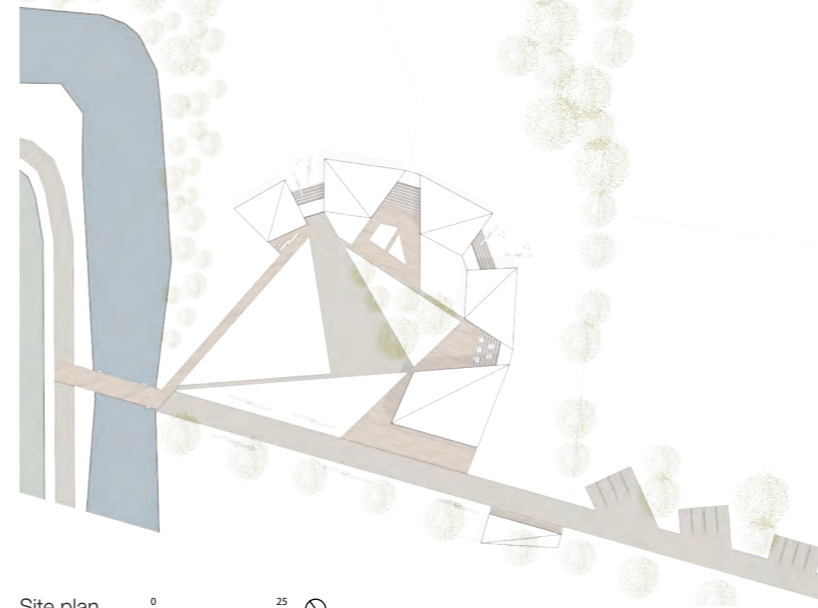
Situation plan

View from the salina on the structures





View on museum from South



Site plan 0 25 10



Site geometry 0 10 10

Katja Jagličić

Salinas - salt production & eco tourism

South entrance with museum of Salinas natural heritage

The museum is situated in the south part of the salt pans, close to Velika Plaža. It serves as one of the entrances to the area, offering visitors the opportunity to discover the process of salt production and the natural environment of the salt pans, as well as to rest and refresh.

The complex building form follows the geometry of nature on the site and is directing the visitor towards the bridge to the salina. It is the form of the building itself that leads the visitor through the exhibition. Every hallway ends with an opening offering a view outside and inviting the visitor to continue the journey. When they leave the museum, a path is already leading them on, across the bridge and to the salt pans.

The museum is designed as five separate volumes, connected by glazed hallways. Their orientation is inspired by the geometry of the salt pans and its surrounding nature. Volumes open up to create small atriums, where people can step outside and come in touch with the flora and fauna presented in the museum's exhibitions.



Section

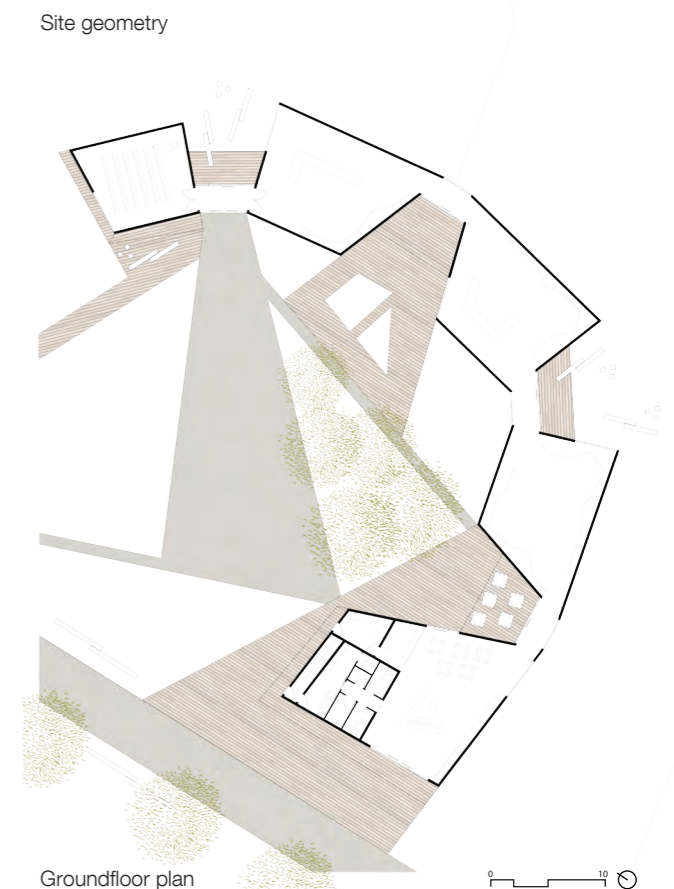


South facade



West facade

Impressions



Groundfloor plan 0 10 10



View from south on restaurant and camp area

- 1. Info post
- 2. Parking
- 3. Bridge
- 4. Renting bike post
- 5. Outdoor gym
- 6. Basketball
- 7. Toilets
- 8. Football field
- 9. Volleyball field
- 10. Jumping place
- 11. Spa
- 12. Regeneration zone
- 13. Resting place
- 14. Camping toilets
- 15. Waterfall
- 16. Instalation room
- 17. Camping reception
- 18. Scenary
- 19. Restaurant
- 20. Bath zone
- 21. Eco pool



Site plan

Pablo Galdo

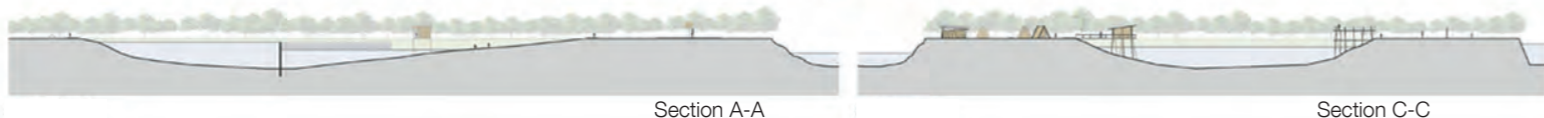
Salinas - salt production & eco tourism

Revitalizing of former water basin with eco pool, sport, camping and mud SPA area



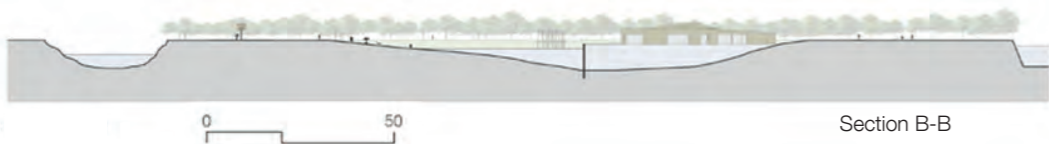
In the north part of the salina there are few basins with the objective of accumulation water during the whole year.

In the moment, one of this basins is empty, so we will include some facilities for recreation in this tourist programme. In this resort we will place an eco-pool for swimming and water activities, sport facilities, one spa, a small camping with s restaurant and place for events and a lot of places for resting between nature.



Section A-A

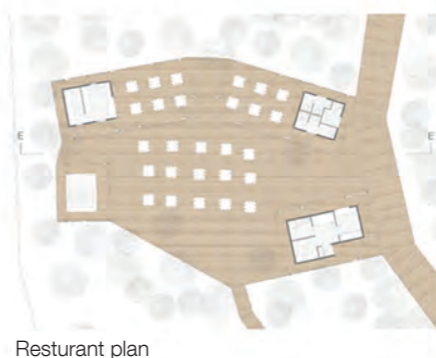
Section C-C



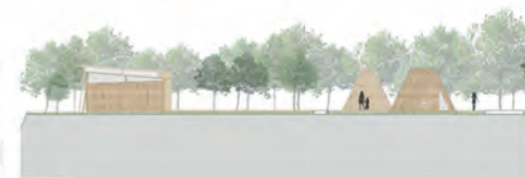
Section B-B



Camping plan



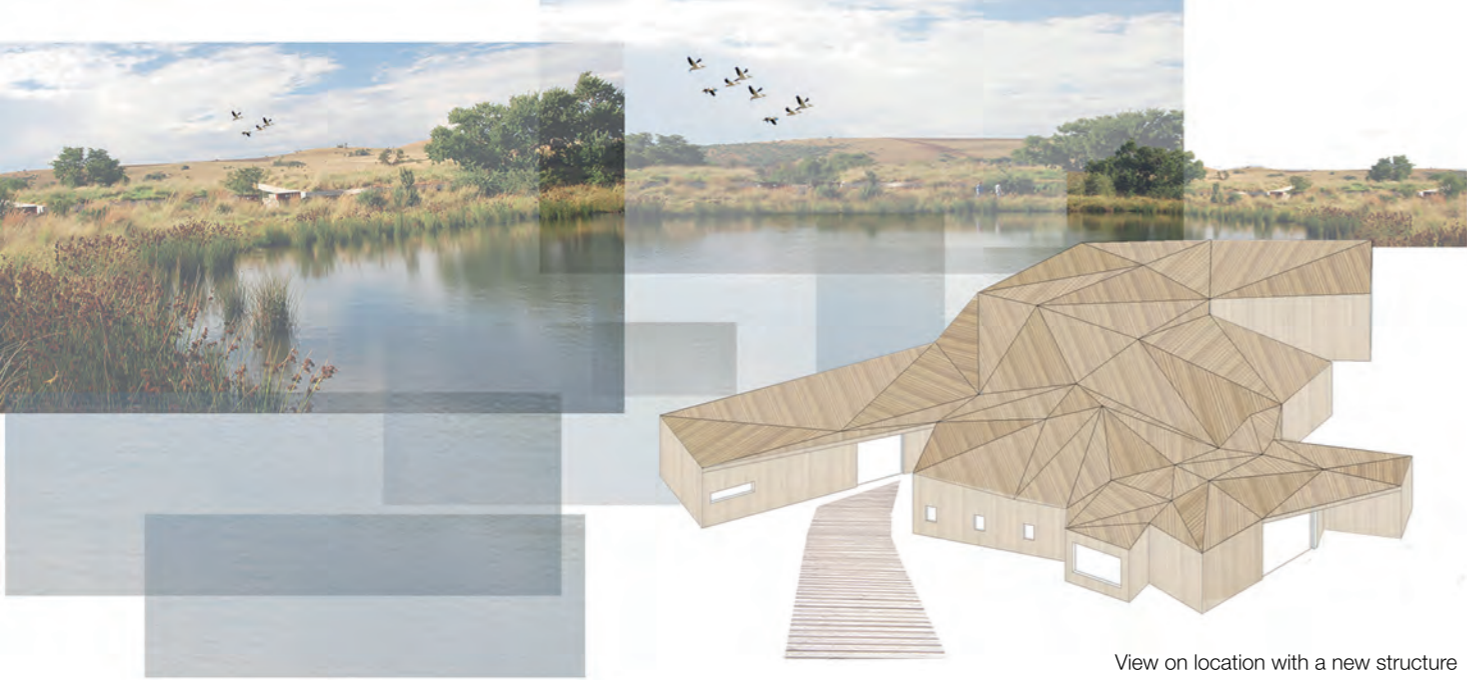
Resturant plan



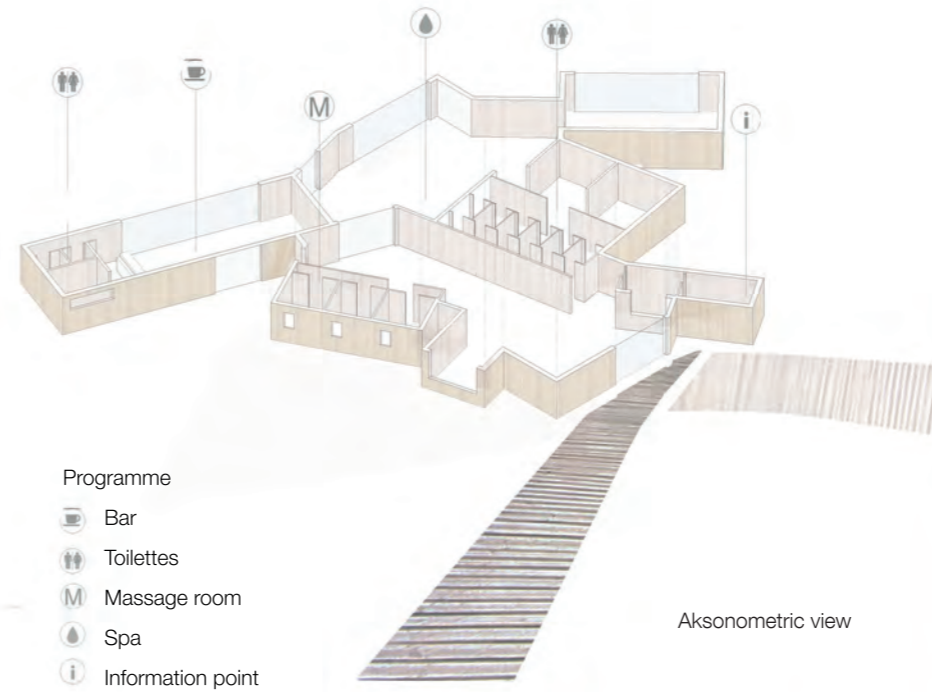
Section D-D



Section E-E



View on location with a new structure



Programme

- Bar
- Toilettes
- Massage room
- Spa
- Information point

Aksonometric view



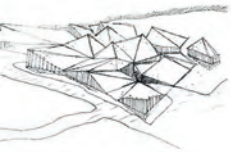
Constructive detail

Lorea Diaz

Salinas - salt production & eco tourism

Revitalizing of former water basin with eco pool, sport, camping and mud SPA area

This spa is located in the ecological pool, in a crossing between two roads. is composed by a bar, information point, massage rooms and spa. The building has two different heights so the bar, and the entrance are at the same height as the street and the spa is located 1 m below so the contact with the water is more intense.



Location: Ulcinj (Montenegro)



Existing pool



Ground floor



Photomontage

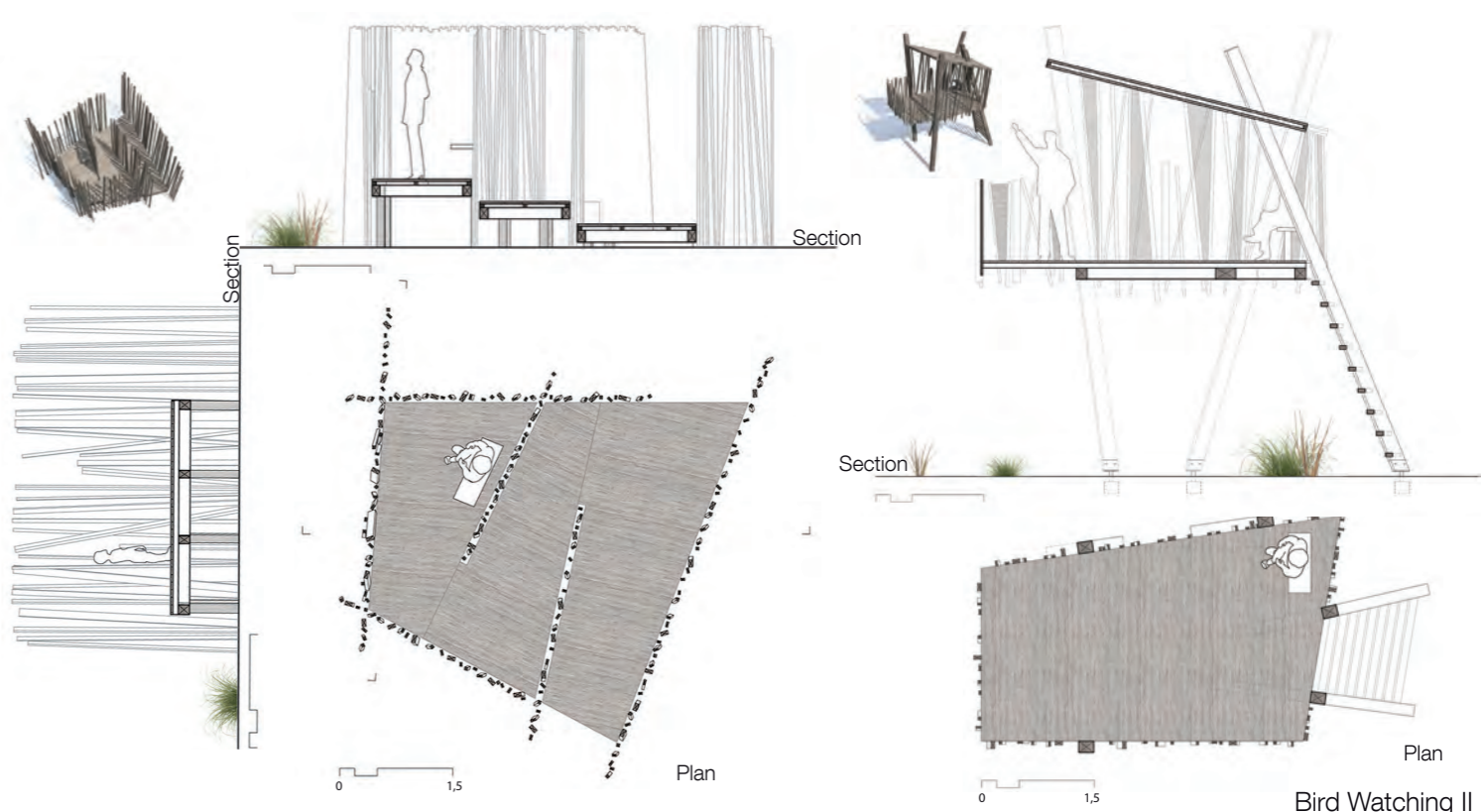
Raphaëlle Gaury

Salinas - salt production & eco tourism

Thematic pathways and bird watching structures

Thematics pathways include the creation of three "bird watching" pathways. Located all along these pathways, you can find different structures to rest and to observe birds easily. Three of them are made with local wood in a such way to protect the area and to fit with the existing landscape. The wooden sticks are in a randome way, in connection with the vegetation in the surrounding.

The bird watching I is a flat installation offering the possibility to rest and to hide for waiting birds. Moreover, some panels give some informations about the site, the fauna and the flora. The second one, the bird watching II, works with three different platforms. Visitors enter in a kind of nest, they can just walk through or climb to the last level to rest and observe birds. The bird watching III is the highest one. It allows people to have a nice point of view from above the path. There is one on each pathway.



Bird Watching II



BIRD WATCHING I



Photomontage



Photomontage