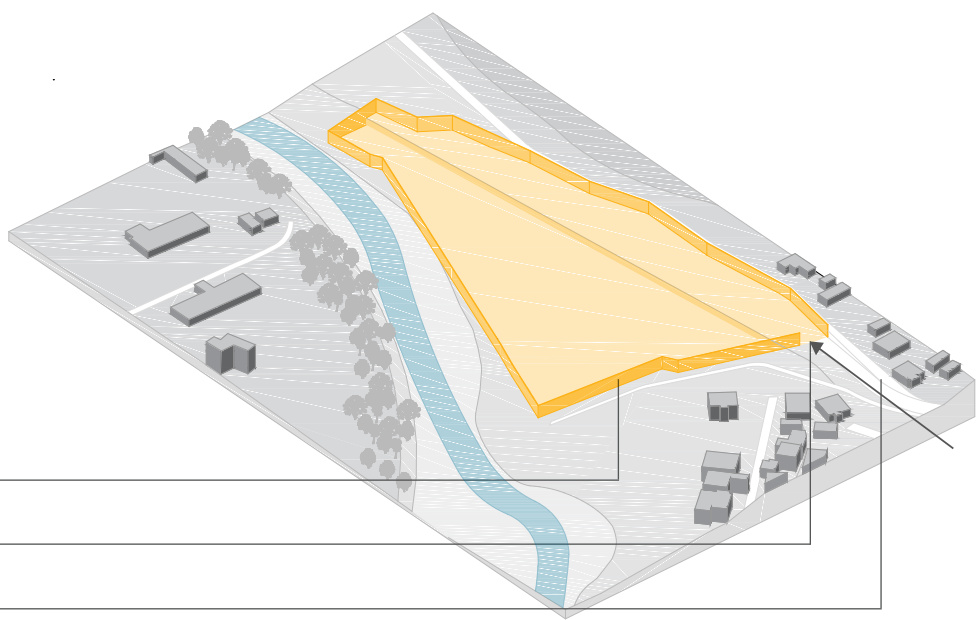




## OBJECT PLACEMENT AND URBAN PLANNING

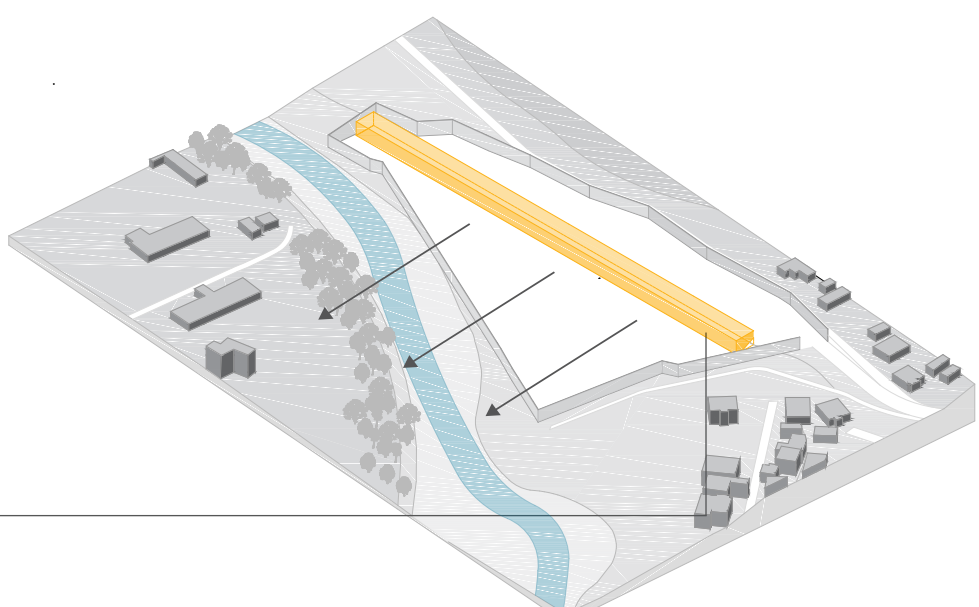
**1** To use as much of the space that the location parcel is offering the main boundary is placed on the verge of the location. The facility is accessible same as before, connecting to a local road with the rest of the city.

MAIN PHYSICAL BOUNDARIES  
FACILITY ACCESSIBILITY  
CONNECTION TO EXISTING INFRASTRUCTURE



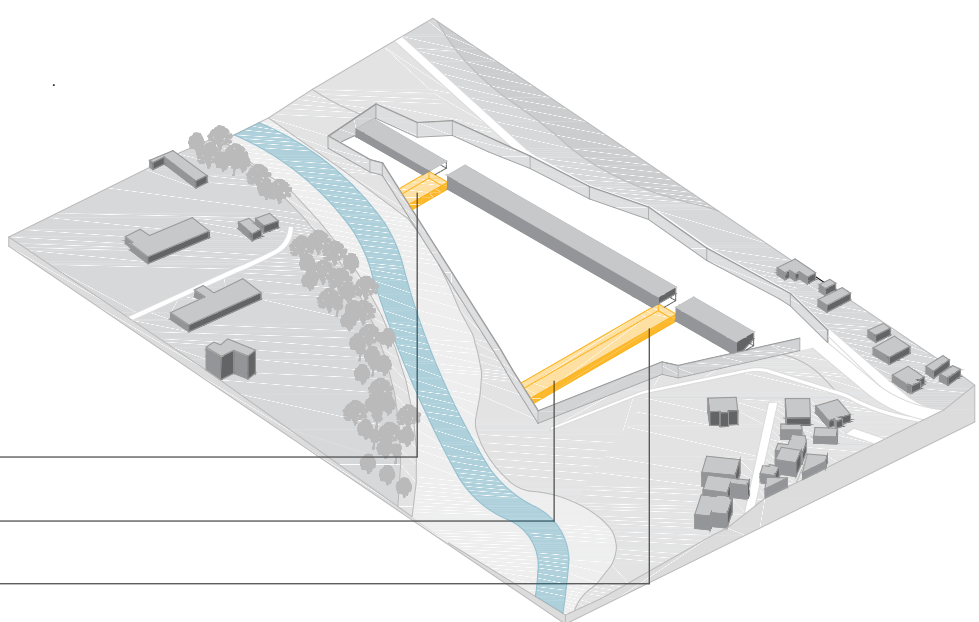
**2** The accommodation blocks are positioned in a straight-line manner on the lower level of the parcel, facing south.

SOUTH FACING ACCOMMODATION BLOCKS



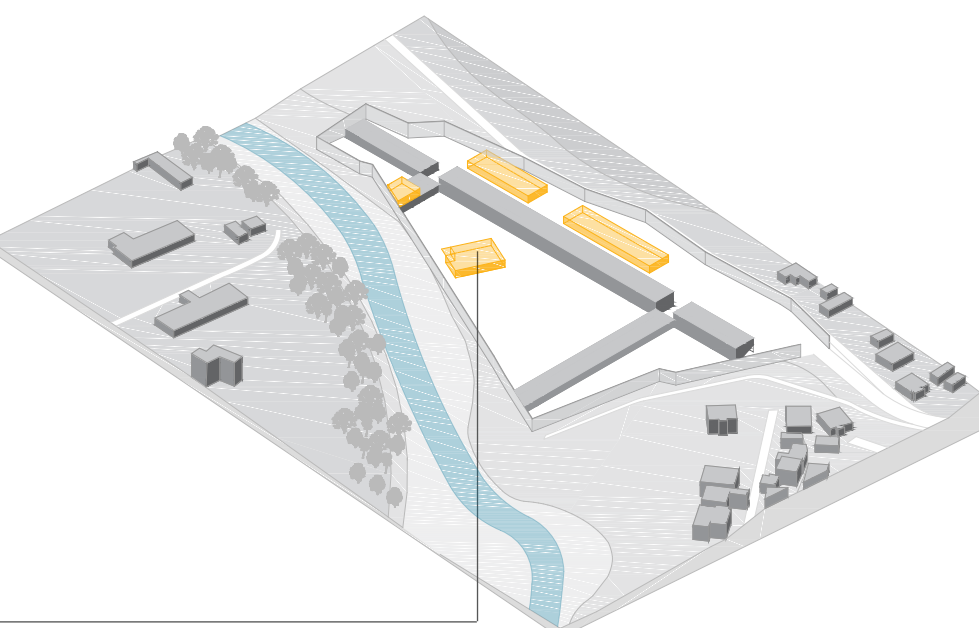
**3** Daytime programs are positioned at a right angle towards the accommodation blocks. Thus, dividing the lower part of the parcel in to three groups: closed-section inmates, half-open section inmates and detainees, respectively.

CLOSED SECTION-DAYTIME AREA  
HALF-OPEN SECTION-DAYTIME AREA  
DETAINEES SECTION-DAYTIME AREA



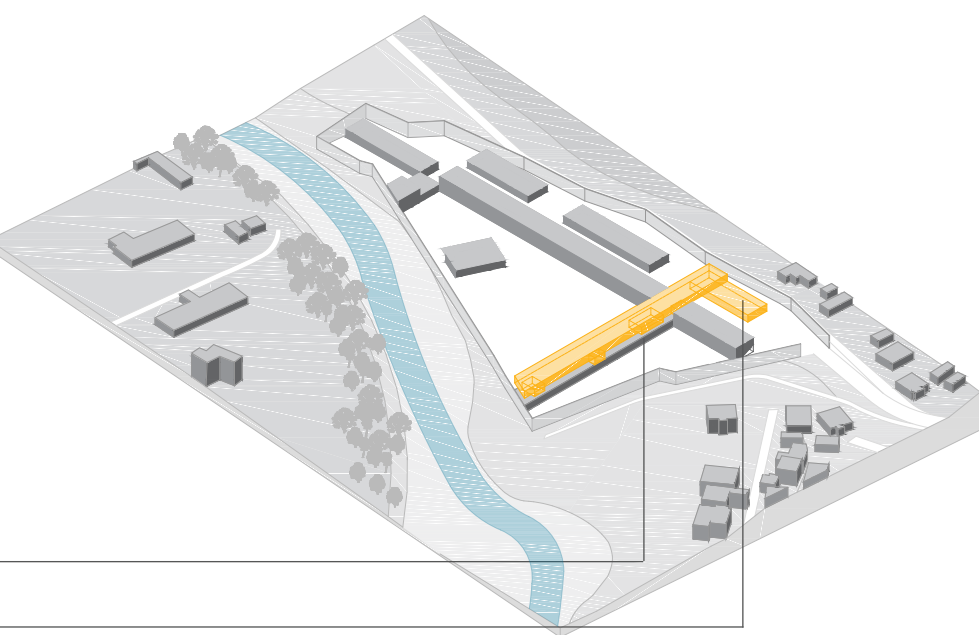
**4** Daytime programs are organized in a campus model. This reassures greater movement by the inmates and encourages a normal day routine, different locations for accommodation and job, education or free activities per example.

CAMPUS SYSTEM OF DAYTIME ACTIVITY PROGRAM



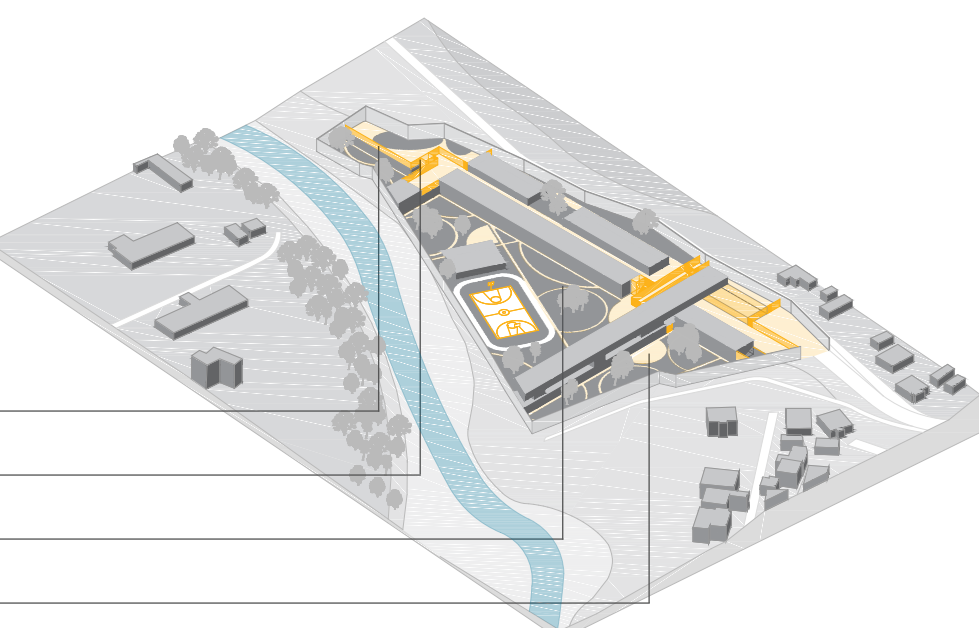
**5** Main gate support is located strategically at the very entrance of the facility. Other staff programs and jail support is positioned at the highest level, outside of reach for the inmates (divided by a clear boundary, but also visually), but also providing a clear view for staff members.

STAFF PROGRAM/ JAIL SUPPORT  
MAIN GATE SUPPORT



**6** Besides the division that is granted by the placement of buildings, although minimal, additional inside boundaries are required. All the spaces between are reserved for nature. All of the programs, especially the main daytime activities and accommodation are opening towards the greenery inside the facility.

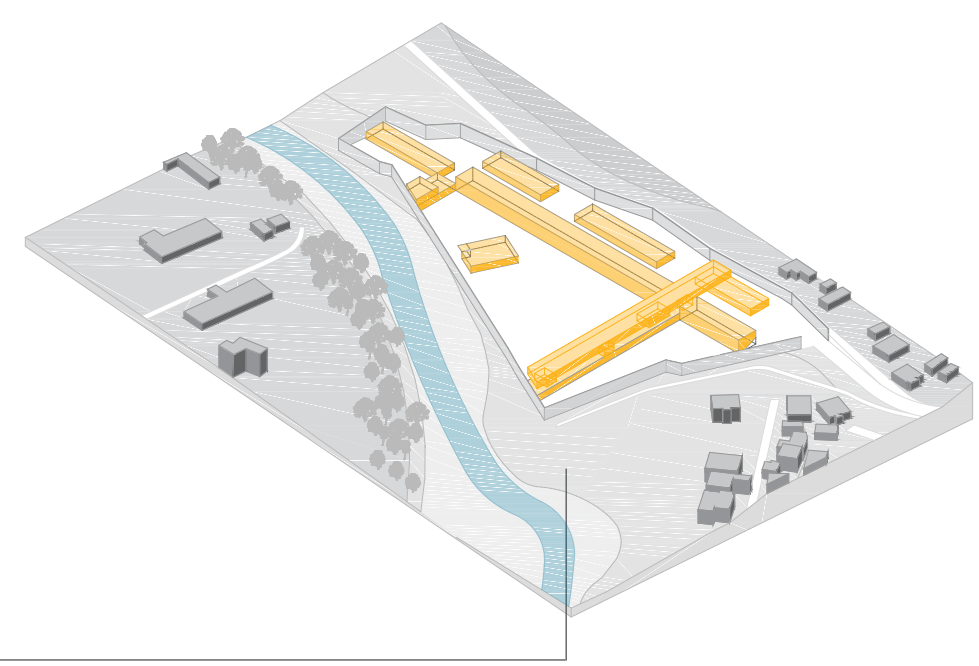
INSIDE BOUNDARIES  
CONNECTIONS  
PATHS  
GREENERY



## ARCHITECTURE CONCEPT

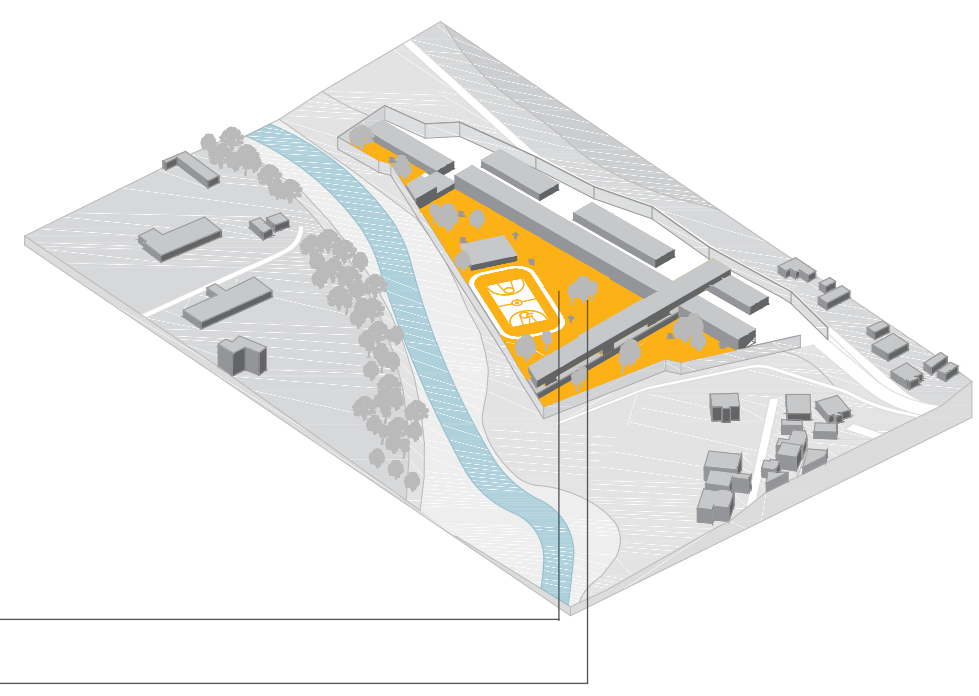
Closed spaces are organized in a shape of straight intersecting volumes. This correct and clear form represents strictly specified rules inside the correctional facility, and likewise gives a sense of order and discipline. Furthermore, it defines the boundaries inside the facility in a very clear and simple manner.

STRAIGHT INTERSECTING VOLUMES  
REPRESENTING DISCIPLINE AND ORDER



More freedom and sense of free choice making is given in the open spaces inside the facility. Making a cultural reference (Bitola's most known street Shirok Sokak, promenade street as long as two km) likewise, there are promenade paths connecting with each other through organic forms. Spaces between the paths are intended for nature, also giving the illusion of freedom.

ORGANIC LINES FORMING INTERSECTING  
PATHS, SENSE OF FREEDOM AND SELF DECISION MAKING  
MAKING SPACE FOR NATURE

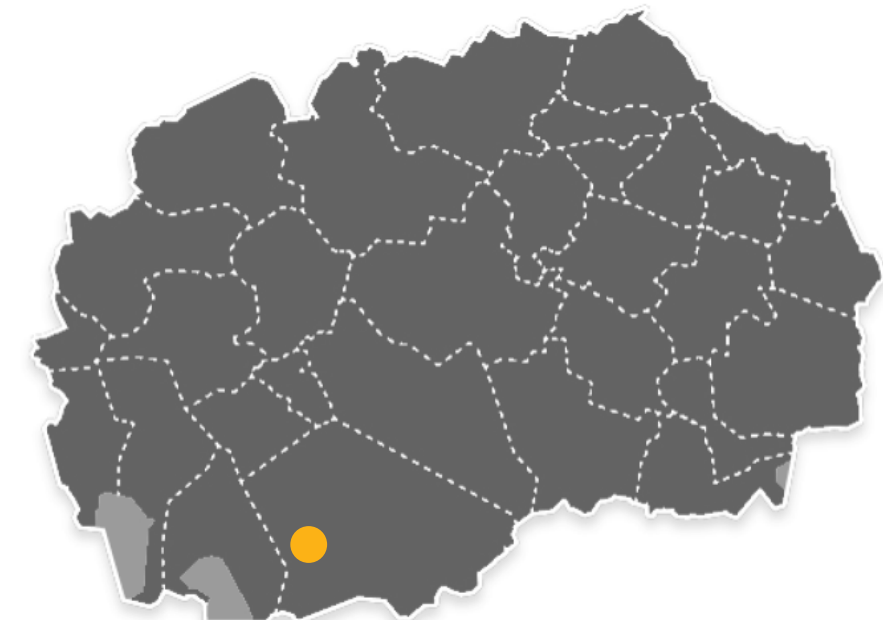


# CORRECTIONAL FACILITY IN BITOLA

CONCEPTUAL DESIGN OF THE  
REPUBLIC OF NORTH MACEDONIA



Situation M 1:1000



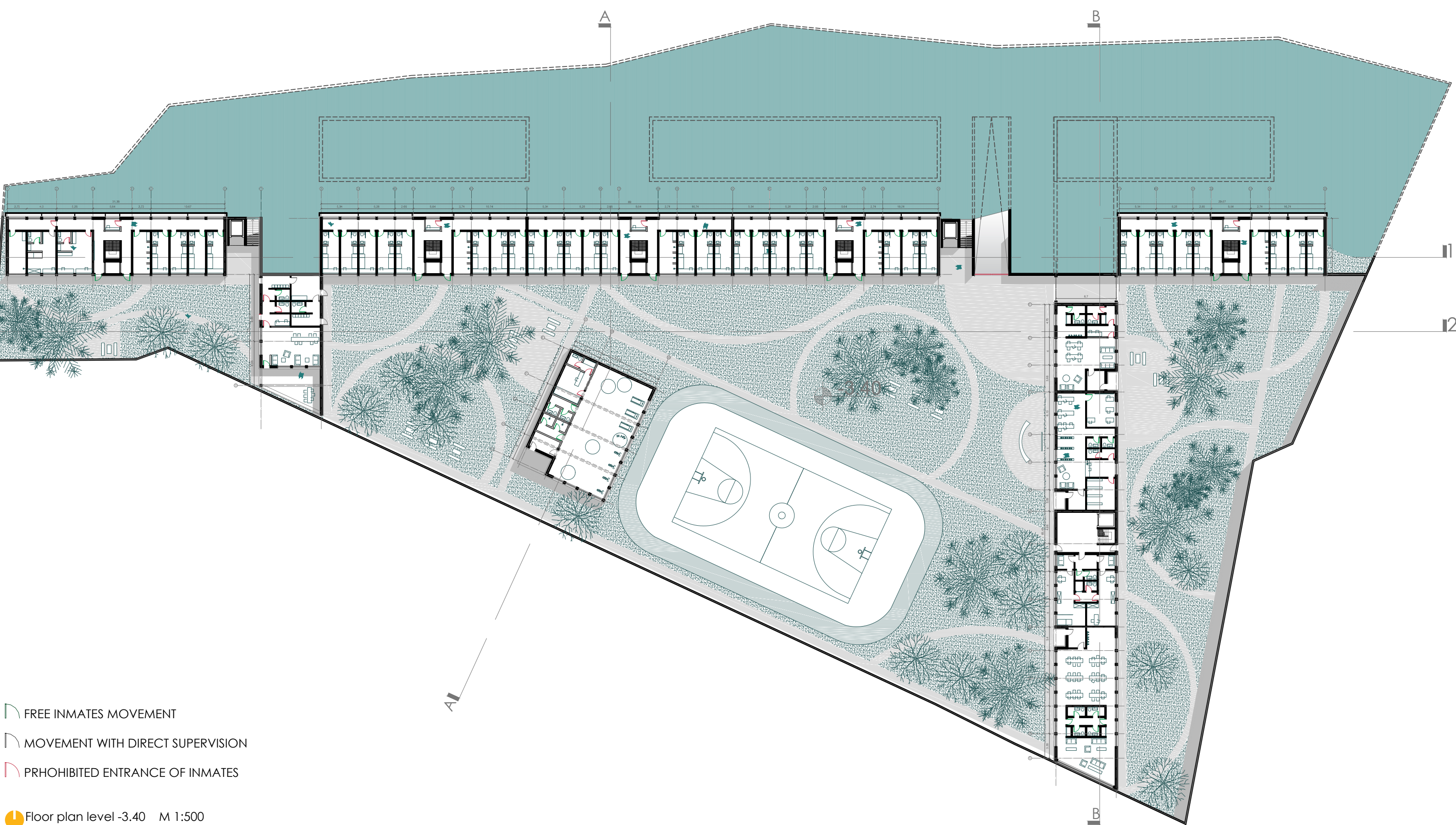
Map of RNM (yellow dot=location of Bitola)

WHERE AND WHY?



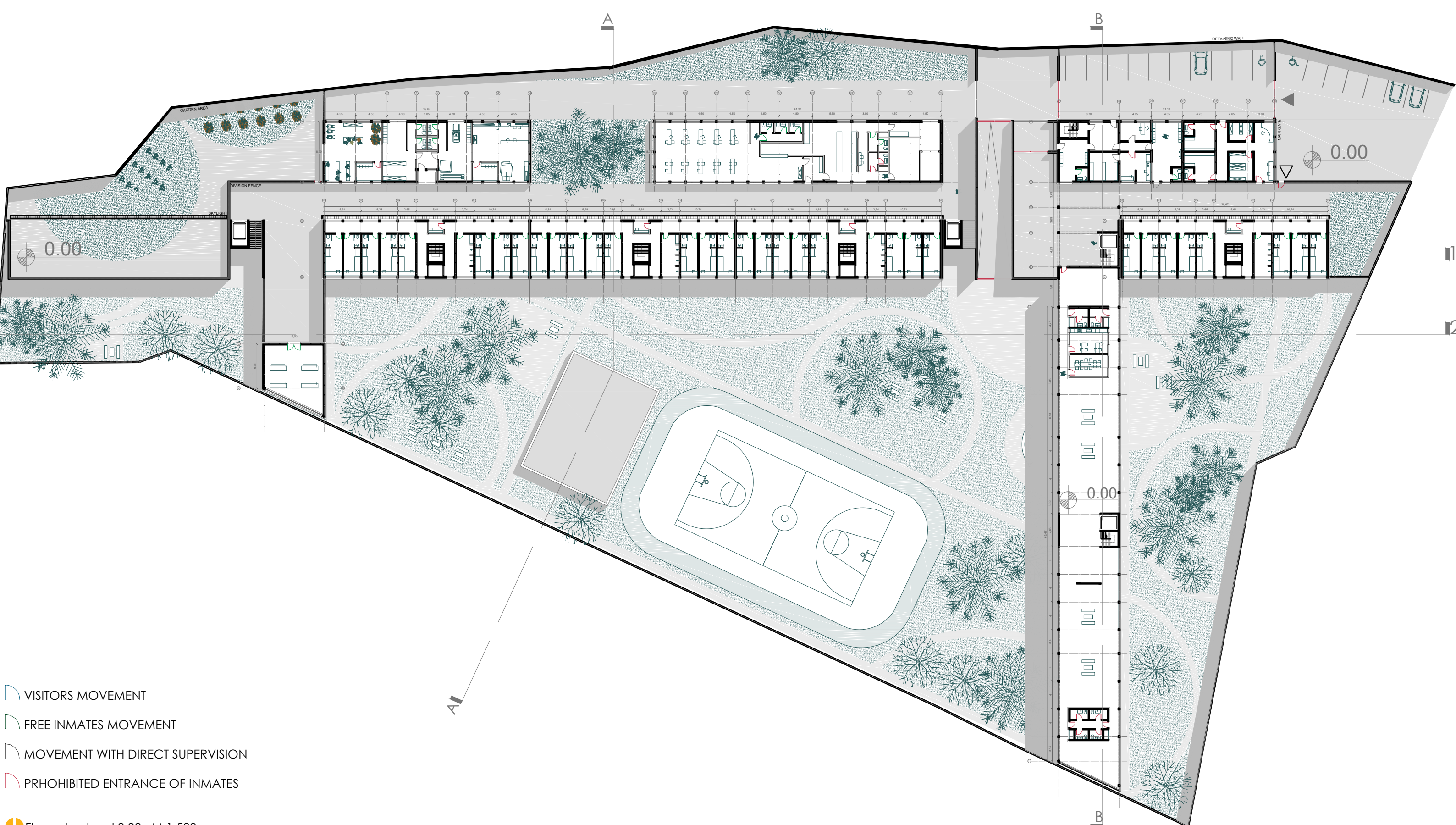
Photography of a correctional facility in RNM

**“Inhuman conditions in the correctional facilities in RNM”**



FREE INMATES MOVEMENT  
MOVEMENT WITH DIRECT SUPERVISION  
PROHIBITED ENTRANCE OF INMATES

Floor plan level -3.40 M 1:500

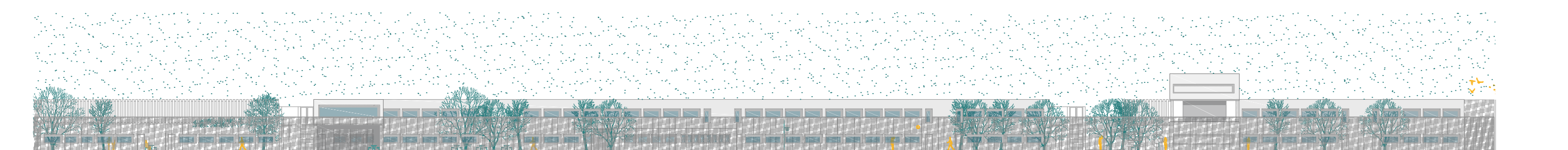


VISITORS MOVEMENT  
FREE INMATES MOVEMENT  
MOVEMENT WITH DIRECT SUPERVISION  
PROHIBITED ENTRANCE OF INMATES

Floor plan level 0.00 M 1:500



Section 1-1 M 1:500



South facade M 1:500



FUNCTIONAL SCHEME

Inmates' accommodation and daytime area

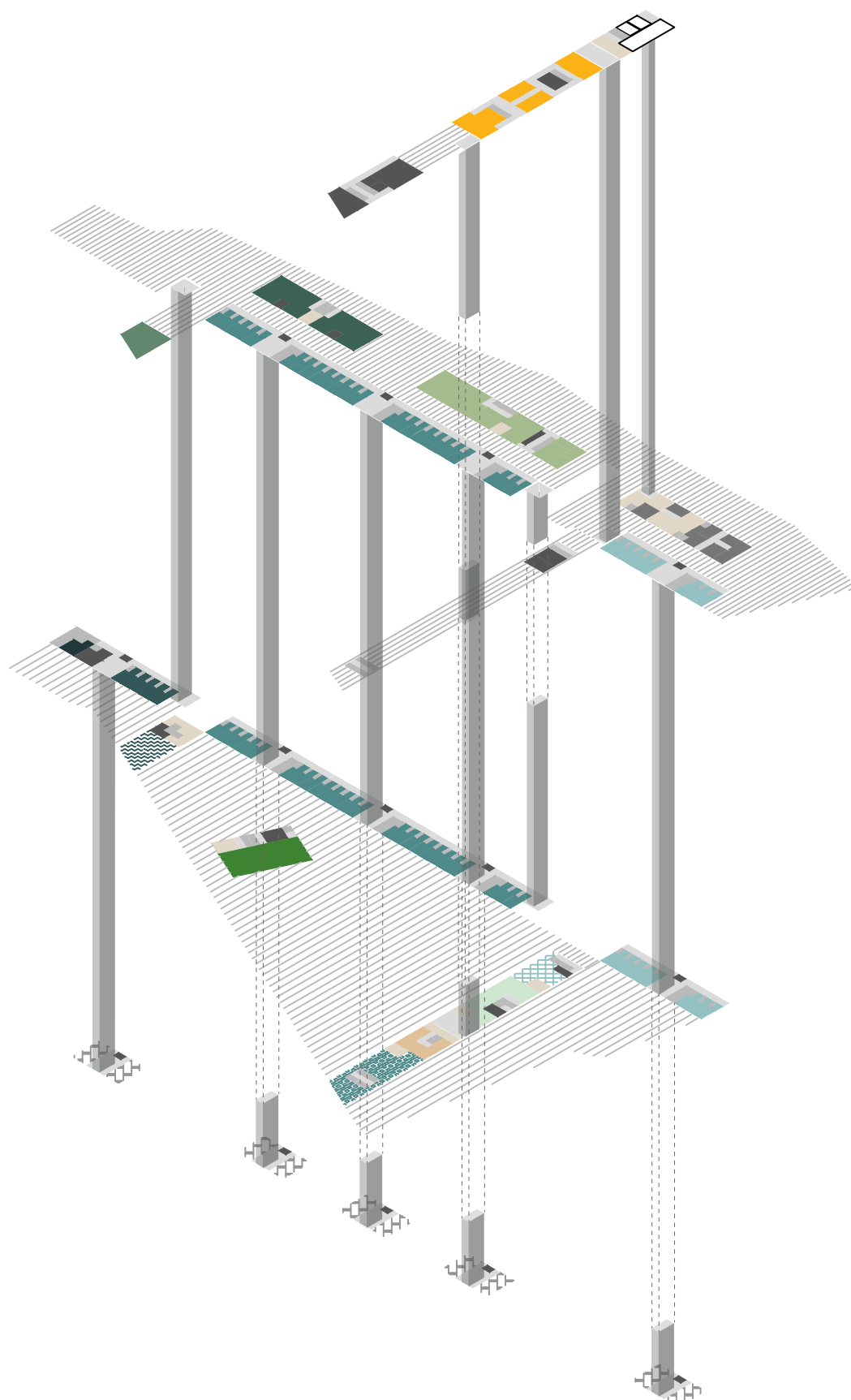
- Isolation cell
- Closed section-accommodation
- Half open section-accommodation
- Detainees section-accommodation
- Closed section-daytime
- Half open section-daytime area
- Detainees section-daytime area

Inmates' daytime activities and necessities

- Inmate gym
- Psychology and medical room
- Education area
- Farm and garden / Wood workshop area
- Dining room/kitchen/kitchen storage
- Prayer room
- Visitation area

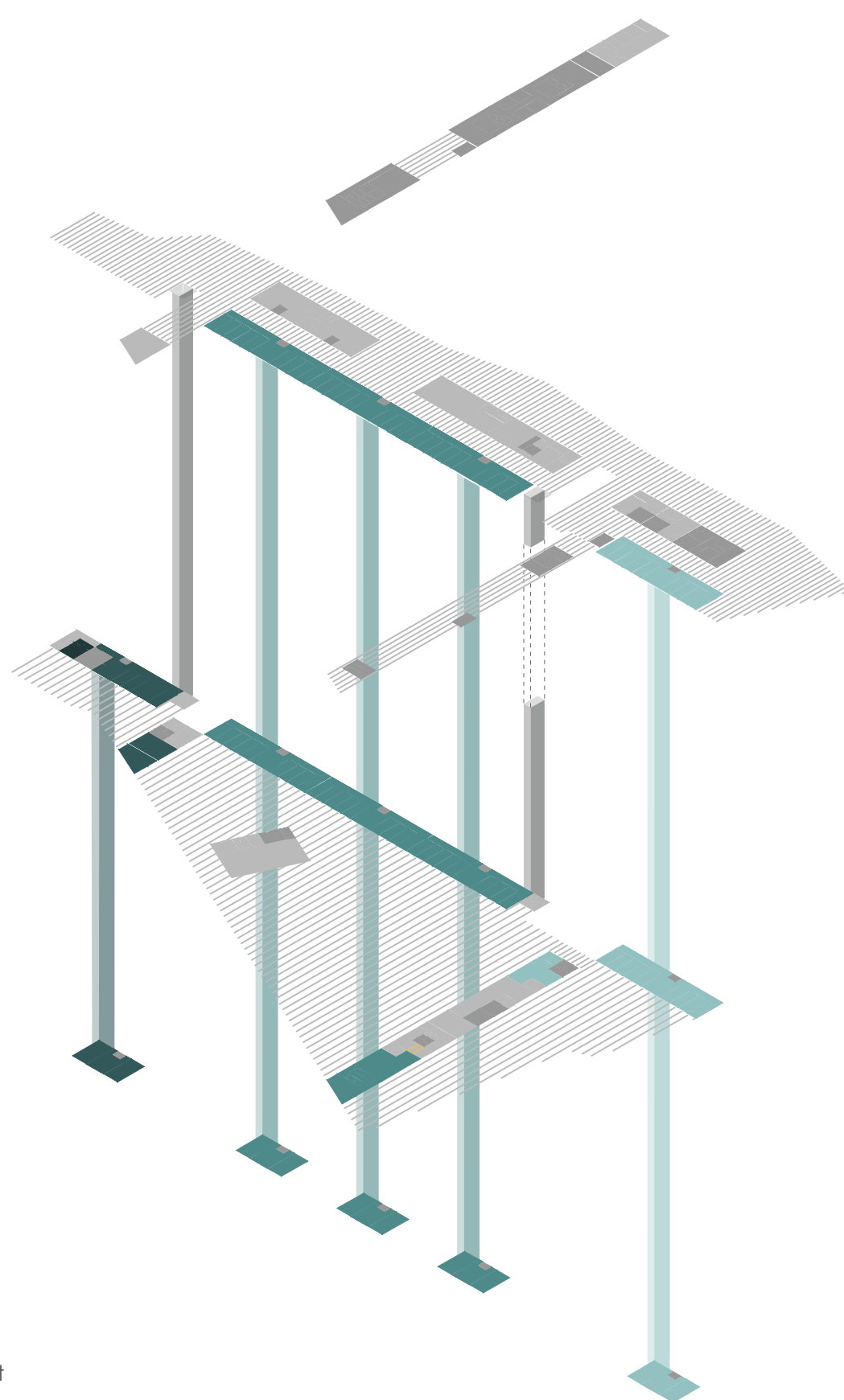
Jail support

- Staff area/ staff support
- Accounting and finance offices
- Processing area
- Corridor
- Storage/support
- Outdoor area



IMITATIONS SCHEME

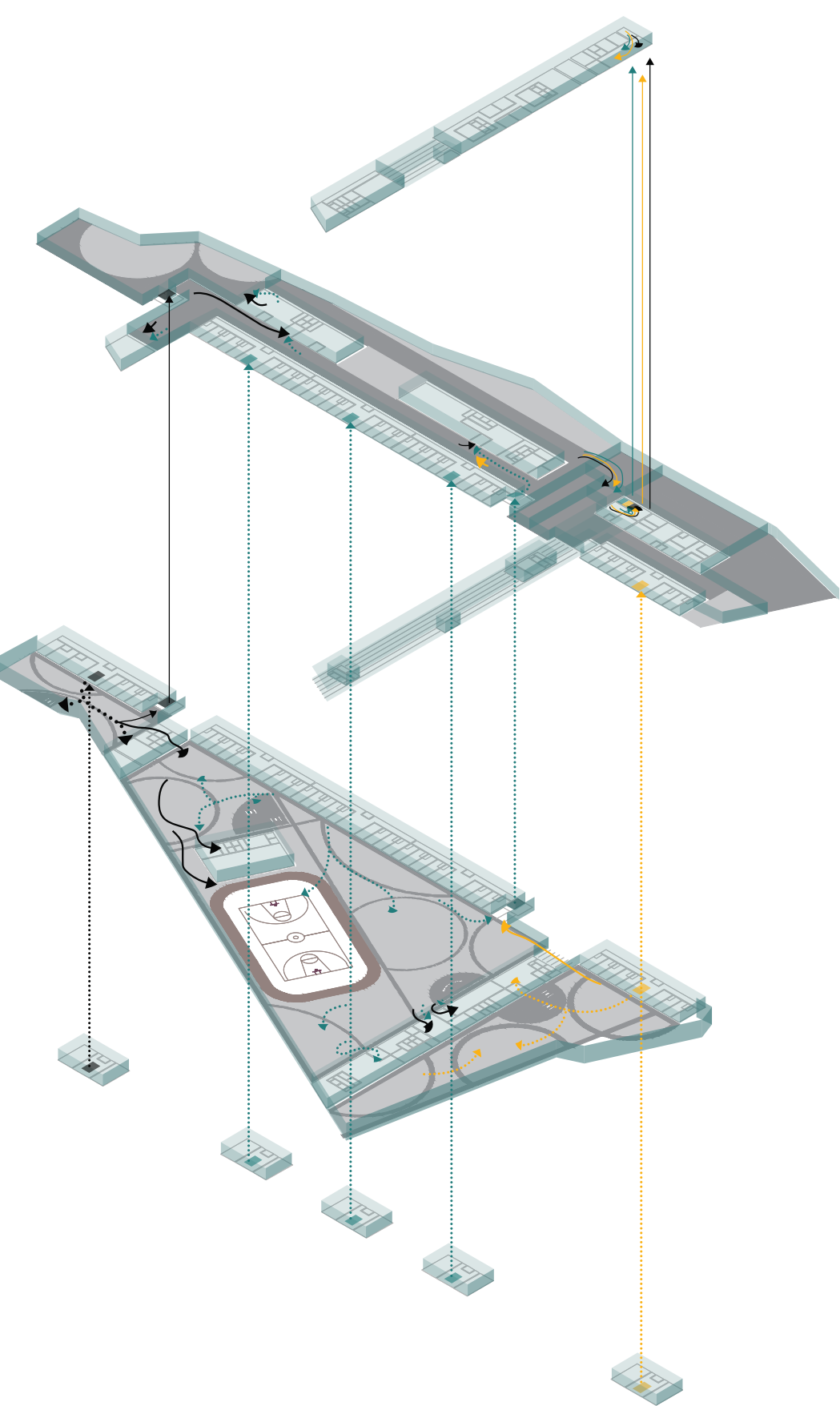
- Isolated inmate
- Closed section inmates
- Half-open section inmates
- Detainees
- Inmates prohibited area
- Inmates' accessibility with time limitations
  - Closed section inmates: prescribed time periods
  - Isolated inmate: forbidding
  - Half open section inmates: free daytime movement
  - Detainees: prescribed time periods



INMATE MOVEMENT

As previously mentioned, there are three different possibilities of incarceration in the facility, therefore three different sections. Each group has a different allowed path of movement. The closed section inmates have a limited time period movement regarding day-time activity programs. The half-open section inmates can move freely in the presented paths inside the facility, during daytime. Inmates have more limited movement, as they have short time period incarceration.

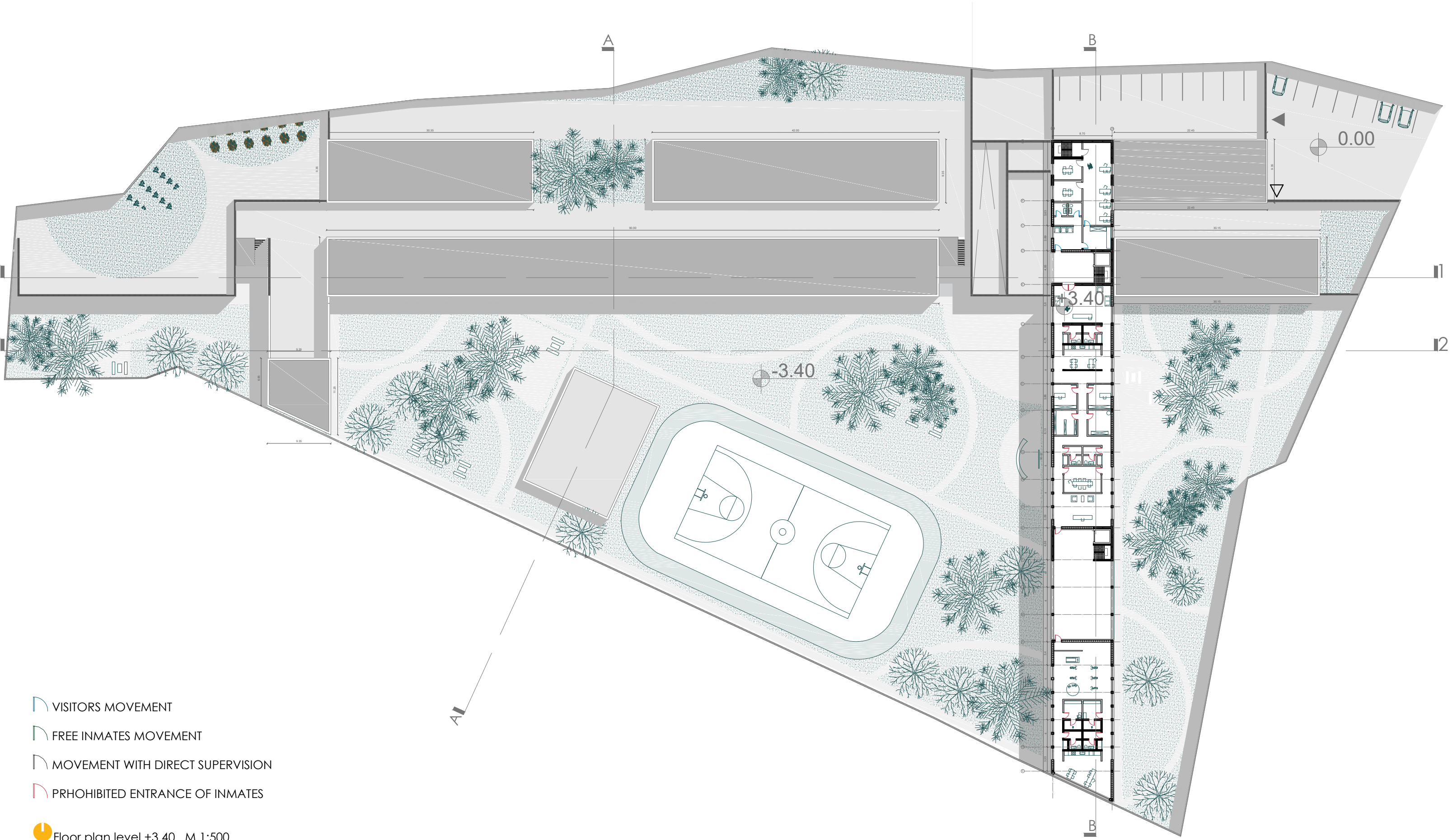
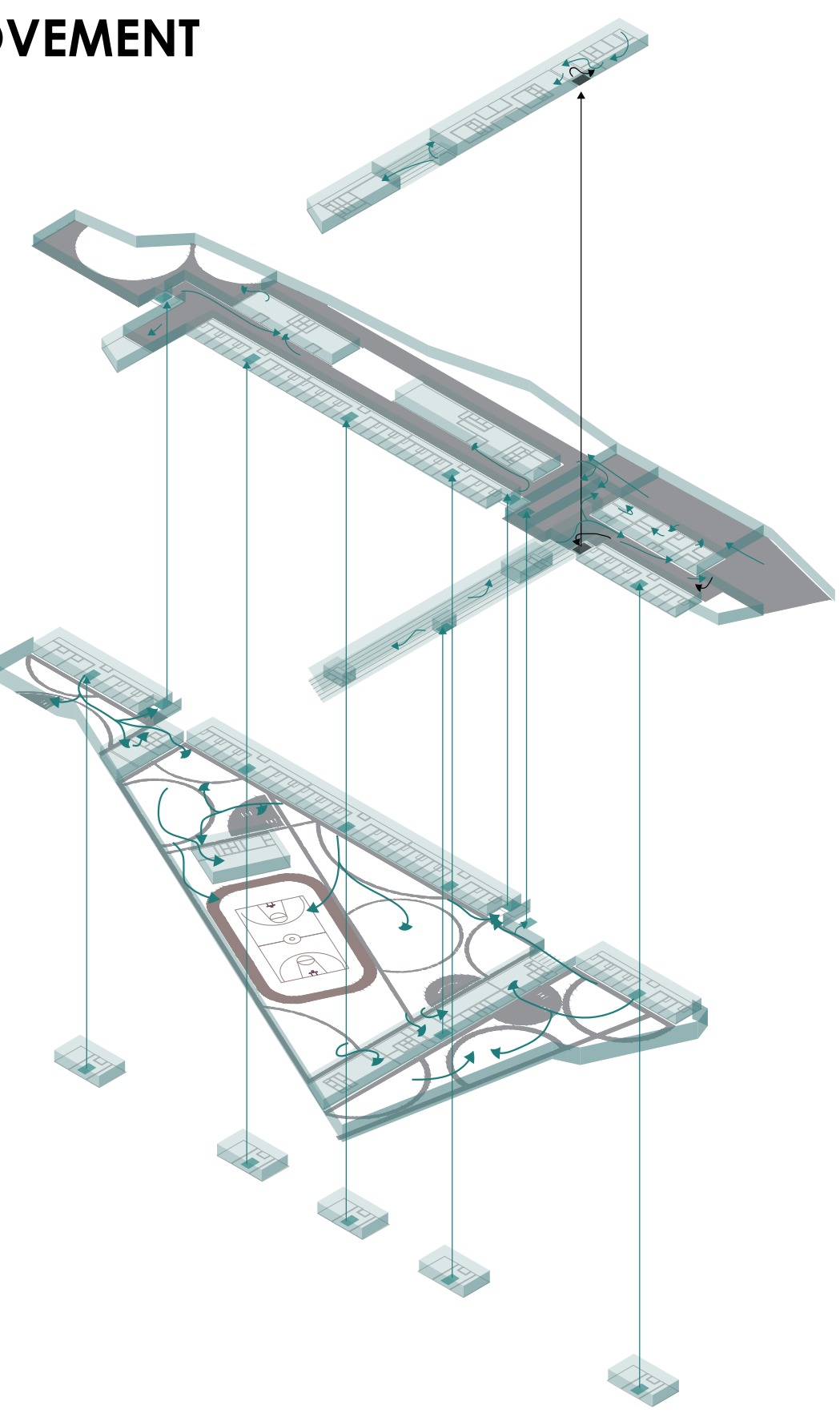
- Closed section inmates
- Closed section inmates- time limitations
- Half-open section inmates
- Half-open section inmates- time limitations
- Detainees
- Detainees-time limitations



STAFF AND VISITORS MOVEMENT

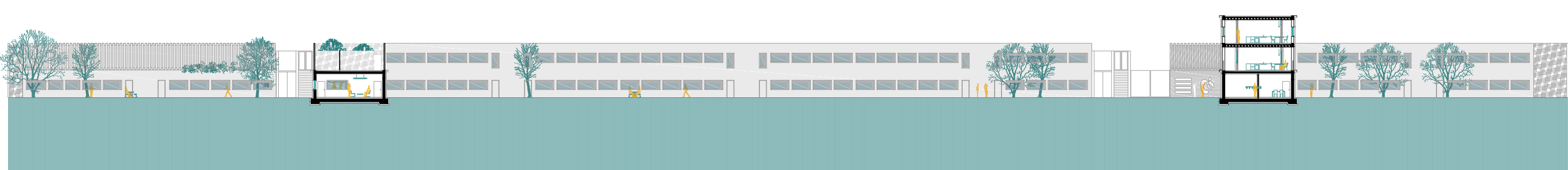
Staff members are allowed to move freely on the premises of the correctional facility. Unlike the inmates, staff members have the possibility to move between different sectors. Visitors have specific path of movement inside the facility and are only allowed in inmate free zone, with the exception of the visitation center.

- Staff
- Visitors



- VISITORS MOVEMENT
- FREE INMATES MOVEMENT
- MOVEMENT WITH DIRECT SUPERVISION
- PROHIBITED ENTRANCE OF INMATES

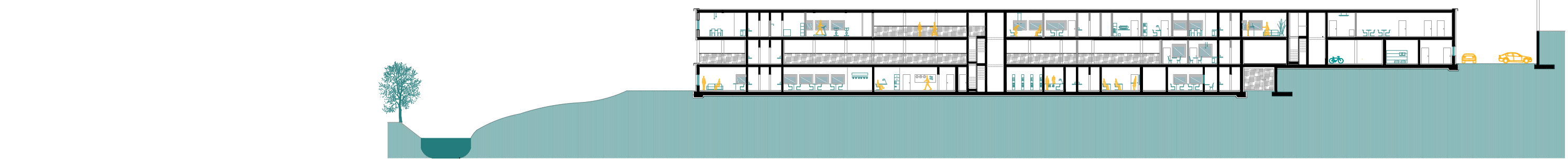
Floor plan level +3.40 M 1:500



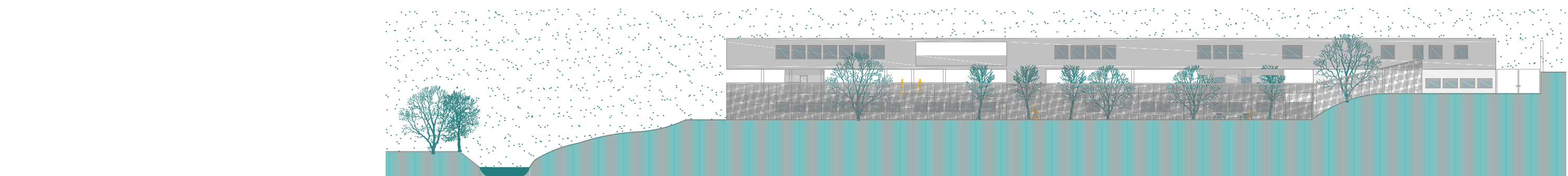
Section 2-2 M 1:500



Section A-A M 1:500



Section B-B M 1:500



East facade M 1:500

CONSTRUCTION

